

1. INTRODUCTION

This country reporting framework has been developed following the structure of the FCPF Monitoring and Evaluation Framework. The semi-annual country reporting should provide the FMT with indications of REDD+ countries' progress towards the achievement of their readiness activities and the implementation of their ER programs overtime, in a way that data are easily consolidated and provide indications on the level of achievement of the FCPF output, outcome and impact indicators as defined in the FCPF M&E Framework.

Submitted country reports should draw upon the country M&E system for REDD + (component 6 of R-PP) and should be prepared in consultation with members of REDD task force or equivalent body as well your Delivery Partner (IDB, World Bank or UNDP). Inputs from stakeholders including IPs and CSOs should be integrated into national reporting, and divergent views indicative of lack of consensus on specific issues should be recorded in the country report.

It is expected that the annual progress country reporting will be submitted to the FMT by **August 30th** each year. A self-assessment of progress will be conducted as part of this country reporting. An update of this country reporting will also be submitted by **March 30th** each year.

2. INSTRUCTIONS

Color Coding of Survey Fields

	Dark blue fields as headings that match your R-PP and the M&E Framework
	Follow the instructions in the White fields
	Fill in fields with the blue color to the best of your ability

Not: Information is to be provided cumulatively. If the information requested is not available or not relevant at the time of the reporting, simply put **"does not apply – n/a"** in the appropriate field.

3. HELP

For help or questions, do not hesitate to email Erin Conner, Neeta Hooda or Kate Cecys.

Kate Cecys: kcecys@worldbank.org

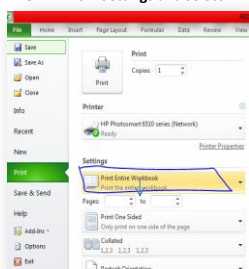
Erin Conner: Econner@worldbank.org

Neeta Hooda: Nhooda@worldbank.org

4. PRINT COMPLETE WORKBOOK

To print the entire Survey Excel Workbook go to:

File-->Print-->Settings and select **"Print Entire Workbook"**



Start

Please Provide Contact Information:

Participant Details:	Lao PDR
Contact Country:	Lao PDR
Contact Name 1:	Mr. Khamsene Ounkham
Title 2:	Head of REDD Unit, Department of Forestry, Ministry of Agriculture and Forestry
Contact Name 2:	
Title 2:	
Contact Email:	khamseoneok@gmail.com
Alternate Email:	
Contact Telephone:	856 20 5446 6829
Alternate Telephone:	
Submission Date:	4/23/2014

1. GENERAL INTRODUCTION

Introduction to the report, its main purpose and sections. Short description of FCPF support in country.

The reports intends to outline the country progress, its achievement and recommendation for the preparation of the project. The Project Development Objective is to contribute to Lao PDR's efforts to design and implement a sound national REDD+ strategy.

Achieving this objective will enable Lao PDR to participate in and benefit from the emerging performance-based payment system from REDD+ within the context of the UN Framework Convention on Climate Change. The activities aim to put into place socially and environmentally sound policies and programs to reduce deforestation and forest degradation, an internationally recognized reference emission level, generate forest carbon emission scenarios, and technically robust systems of forest monitoring and emissions reporting. The program will also focus on non-carbon outcomes vital to achieving REDD+ objectives which will include enabling forest policy and regulations, increasing the participation of local communities in forest management, building institutional capacity in the forestry sector, improved information and data management and related activities which will contribute to the overall development of forests and well-being of communities in Lao PDR and contribute to the national goals of poverty reduction, economic development and environmental sustainability.

2. SUMMARY OF REPORT

Summary of progress, key achievements with a focus on higher level results and important issues/problems that arose during the reporting period. Highlights of next steps in following period -- key bullets only

Progress:

- ☑ Integrated Safeguards Datasheet has been approved
- ☑ Procurement plan has been drafted and being reviewed
- ☑ TOR for consulting firms has been drafted and being reviewed

Key Achievements with focus on higher level results:

Grant Agreement has been signed by the World Bank on 4 March 2014. The client expects to sign it in mid May 2014

Important issues /problems that arose during the reporting period:

Delays in process for Grant Agreement approval. It took a while for the Bank to approve and it is now with the client. It is expected that it will be signed in mid May 2014

Highlights of next steps in the following period:

- ☑ Following up the Grant Agreement signing by the client
- ☑ Project effectiveness at the date of the co-signing
- ☑ Project Launching workshop
- ☑ Finalize procurement plan
- ☑ Finalize TOR for consulting firms
- ☑ Recruit consulting firms and consultants
- ☑ Procure vehicles, equipment and renovate office
- ☑ Project implementation

3. MAIN ACHIEVEMENTS AND RESULTS DURING THE PERIOD

The section below should provide qualitative and quantitative data on the progress towards expected results along the following subsections. Information is to be provided cumulatively. If the information requested is not available or not relevant at the time of the reporting, mention **"does not apply – n/a"**.

3.1 PROGRESS AT THE IMPACT LEVEL (if any data available)

Please provide here any quantitative and qualitative information, if available on the following criteria/indicators.

does not apply

Number of tons of CO2 emissions from deforestation and forest degradation reduced in the country during the reporting period as compared to the measured REL/RL, if any :

National Forest Reference Emission Level (REL)/Reference Level (RL) defined:

does not apply

Number of tons reduced during the reporting period as compared to REL/RL:

does not apply

Amount of non-FCPF investments received under R-PP process:

Source:

does not apply

does not apply

does not apply

<Select> Amount Provided:

Currency

Currency

Currency

Amount of non-FCPF investments received for implementation of ER Programs (e.g. FIP, bilateral donors, private sector), if relevant:

Source:

does not apply

<Select> Amount Provided:

Currency

Currency

Currency

Currency

Currency

Level of multi-stakeholder participation and engagement in decision making processes related to emission reductions and forest resource management:

Please describe the process of engagement and consultation implemented, including describing the level of participation and engagement for the following stakeholder categories: Government Agencies, Indigenous Peoples, Other forest-dependent peoples, Women, Youth, Civil Society Organizations, Private Entities, Donors, and Others

A consultation and participation plan was developed during the R-PP formulation process. GoL conducted an initial stakeholder analysis and mapping exercise identifying which stakeholders are likely to be affected by REDD+, both positively and negatively. Following this plan, extensive information sharing and consultation activities were held at national, provincial and local levels throughout the country. Multi-stakeholder workshops were held at the national and sub-national levels bringing together various stakeholder groups including sectors engaged in land use at national and local government level, private sector, CSOs, and women's groups representatives. Issues discussed related to R-PP preparation, including exploration of both underlying drivers of deforestation, and lessons from existing strategies to address deforestation and degradation in Lao PDR.

Nb. and type of policy reforms underway or completed complying to REDD+ standards, if any (FCPF M&E Framework Indicator I.3.B.):

Number of policy reforms during the reporting period that are: <Select from dropdown list>

Underway:	#	
	#	
	#	
	#	
Completed:	#	
	#	
	#	

Please describe these policy reforms:

limit to 1 page

3.2 PROGRESS AT THE OUTPUT and OUTCOME LEVEL (if any data available)

3.2.1. REDD Readiness Progress

OUTCOME LEVEL

As a synthesis of the following output level assessments, please briefly describe here the progress made during the reporting period in developing the country Readiness Package (FCPF M&E Framework Indicator 1.A.):

Briefly describe progress made during the reporting period in developing the country Readiness Package:

does not apply

OUTPUT LEVEL

Please indicate which of your country R-PP components and sub-components have received support from FCPF through the Readiness Preparation Grant (>3.4 million USD)

Component	Support from FCPF (Yes/No)
Component 1. Readiness Organization and Consultation	
1a. National REDD+ Management Arrangements	Yes
1b. Consultation, Participation, and Outreach	Yes
Component 2. REDD+ Strategy Preparation	
2a. Assessment of Land Use, Land Use Change Drivers, Forest Law, Policy and Governance	Yes
2b. REDD+ Strategy Options	Yes
2c. Implementation Framework	Yes
2d. Social and Environmental Impacts	Yes
Component 3. REL/RL	
3. Reference Emissions Level/Reference Levels	Yes
Component 4. Monitoring Systems for Forests and Safeguards	
4a. National Forest Monitoring System	Yes
4b. Information System for Multiple Benefits, Other Impacts, Governance, and Safeguards	No

Level of implementation of R-PP as a whole:

Please describe the current R-PP implementation

% Completed:

Forest Information Management (JICA) has produced the Forest Land map (2005,2010) which will be used for measurement of the REL. GIZ conducted a baseline survey in their own project areas with the same purpose

Level of achievement of planned milestones according to approved FCPF-financed Readiness Fund Grant (>3.8 million USD) (FCPF M&E Framework 1.3b):

Planned Milestones:	Level of Achievement:	Tracking:
Mid-term review on 2/29/2016		<div> <input type="radio"/> Significant progress </div> <div> <input type="radio"/> Progressing well, further development required </div> <div> <input type="radio"/> Further development required </div> <div> <input type="radio"/> Not yet demonstrating progress </div> <div> <input checked="" type="radio"/> Not Applicable </div>

3.2.1. CONTINUED Disbursement rate of FCPF-financed Readiness Fund Grant (>3.4 million USD), in %

RF Grant - disbursement rate compared to planned disbursement rate

Disbursement rate of FCPF-financed Readiness Fund Grant (>3.4 million USD), in percentage:		
	Select Actual Disbursement Rate	Tracking
RF Grant - actual disbursement rate compared to planned disbursement rate		<input type="radio"/> Up to 10% variance with plans <input type="radio"/> Between 10 and 25% variance <input type="radio"/> Between 25 and 40% variance <input type="radio"/> More than 40% variance <input checked="" type="radio"/> Not Applicable

Disbursement rate of Total R-PP Budget in percentage:		
	Select Actual Disbursement Rate	Tracking
R-PP Budget - disbursement rate v planned disbursement rate		<input type="radio"/> Up to 10% variance with plans <input type="radio"/> Between 10 and 25% variance <input type="radio"/> Between 25 and 40% variance <input type="radio"/> More than 40% variance <input checked="" type="radio"/> Not Applicable

3.2.1. REDD Progress Levels - Continued

Countries are expected to provide data on the overall level of achievement of planned milestones as defined in their Readiness Preparation Grant Agreement, and, if applicable, on their Supplementary Grant Agreement (additional grant of up to \$5 million). Under their Preparation Readiness Grant Agreement (>3.4 million USD), Countries should provide data on (i) the support to the Coordination of the REDD+ Readiness Process and Multi-Stakeholder Consultations; (ii) the contribution to the Design of a National REDD+ Strategy; and (iii) the preparation of a National Reference Scenario for REDD+

The level of achievement of planned milestones according to the Readiness grant will be summarized through progress scores related to the synthesis of an overall achievement. This is qualitatively expressed with a four-color 'traffic light' scale and then explained. In case the assessment is not applicable, "Non Applicable" can be selected.

The level of achievement of planned milestones per R-PP component should be self-assessed and reported, as well as summarized through progress scores related to the synthesis of this overall achievement, qualitatively expressed on a four-color 'traffic light' scale and then briefly explained. In case the assessment is not applicable, a fifth color scale 'Non Applicable' can be selected. This 'traffic light' scale is based on the system contained in the R-Package Assessment Framework. The R-Package assessment criteria are included to assist countries identify, plan and track their readiness preparations progress with the core aspects and desired outcomes of readiness preparation activities as contained in R-Package Assessment Framework.

Sub-Component 1a	Overall Progress		Progress Against Annual Targets		Tracking*
	Planned Milestones	Cumulative Progress Towards Milestones	Expected Annual Target	Achievements of the Annual Target	
1a - National REDD+ Management Arrangements Purpose: setting-up national readiness management arrangements to manage and coordinate the REDD-plus readiness activities whilst mainstreaming REDD-plus into broader strategies Assessment Criteria: (i) accountability and transparency; (ii) operating mandate and budget; (iii) multi-sector coordination mechanisms and cross-sector collaboration; (iv) technical supervision capacity; (v) funds management capacity; (vi) feedback and grievance redress mechanism					

Sub-Component 1b	Overall Progress		Progress Against Annual Targets		Tracking
	Planned Milestones	Cumulative Progress Towards Milestones	Expected Annual Target	Achievements of the Annual Target	
1b – Consultation, Participation, and Outreach Purpose: broad consultation with and participation of key stakeholders for future REDD+ programs, to ensure participation of different social groups, transparency and accountability of decision-making Assessment Criteria: (i) participation and engagement of key stakeholders; (ii) consultation processes; (iii) information sharing and accessibility of information; (iv) implementation and public disclosure of consultation outcomes					

Sub-Component 2a	Overall Progress		Progress Against Annual Targets		Tracking
	Planned Milestones	Cumulative Progress Towards Milestones	Expected Annual Target	Achievements of the Annual Target	
2a: Assessment of Land Use, Land Use Change Drivers, Forest Law, Policy and Governance Purpose: identify key drivers of deforestation and/or forest degradation, as well as activities concerning conservation, sustainable forest management, and enhancement of forest carbon stocks Assessment Criteria: (i) assessment and analysis; (ii) prioritization of direct and indirect drivers/barriers to forest enhancement; (iii) links between drivers/barriers and REDD+ activities; (iv) actions plans to address natural resource rights, land tenure, governance; (v) implications for forest law and policy					

Sub-Component 2b	Overall Progress		Progress Against Annual Targets		Tracking
	Planned Milestones	Cumulative Progress Towards Milestones	Expected Annual Target	Achievements of the Annual Target	
2b: REDD+ Strategy Options Purpose: Develop a set of policies and programs for addressing the drivers of deforestation and/or forest degradation Assessment Criteria: (i) selection and prioritization of REDD+ strategy options; (ii) feasibility assessment; (iii) implications for strategy options on existing sectoral policies					

Sub-Component 2c	Overall Progress		Progress Against Annual Targets		Tracking
	Planned Milestones	Cumulative Progress Towards Milestones	Expected Annual Target	Achievements of the Annual Target	
2c: Implementation Framework Purpose: Set out credible and transparent institutional, economic, legal and governance arrangements necessary to implement REDD+ strategy options Assessment Criteria: (i) adoption and implementation of legislation/regulations; (ii) guidelines for implementation; (iii) benefit sharing mechanism; (iv) national REDD+ registry and system monitoring REDD+ activities					

Sub-Component 2d	Overall Progress		Progress Against Annual Targets		Tracking
	Planned Milestones	Cumulative Progress Towards Milestones	Expected Annual Target	Achievements of the Annual Target	
2d: Social and Environmental Impacts Purpose: Ensure compliance with the Common Approach and prepare a country specific Environmental and Social Management Framework (ESMF) Assessment Criteria: (i) analysis of social and environmental safeguard issues; (ii) REDD+ strategy design with respect to impacts; (iii) Environmental and Social Management Framework					

Component 3	Overall Progress		Progress Against Annual Targets		Tracking
	Planned Milestones	Cumulative Progress Towards Milestones	Expected Annual Target	Achievements of the Annual Target	
R-PP Component 3 - Reference Emissions Level/Reference Levels Purpose: Development of the general approach to establish a REL/RL Assessment Criteria: (i) demonstration of methodology; (ii) use of historical data, and adjusted for national circumstances; (iii) technical feasibility of the methodological approach, and consistency with UNFCCC/PPC guidance and guidelines					

Sub-Component 4a	Overall Progress		Progress Against Annual Targets		Tracking
	Planned Milestones	Cumulative Progress Towards Milestones	Expected Annual Target	Achievements of the Annual Target	
4a: National Forest Monitoring System Purpose: Design and develop an operational forest monitoring system and describe the approach to enhance the system over time Assessment Criteria: (i) documentation of monitoring approach; (ii) demonstration of early implementation; (iii) institutional arrangements and capacities- Forests					

Sub-Component 4b	Overall Progress		Progress Against Annual Targets		Tracking
	Planned Milestones	Cumulative Progress Towards Milestones	Expected Annual Target	Achievements of the Annual Target	
4b: Information System for Multiple Benefits, Other Impacts, Governance, and Safeguards Purpose: Specify the non-carbon aspects prioritized for monitoring by the country Assessment Criteria: (i) identification of relevant non-carbon aspects, and social and environmental issues; (ii) monitoring, reporting and information sharing; (iii) Institutional arrangements and capacities – Safeguards					

*This 'traffic light' scale is based on the system contained in the R-Package Assessment Framework. The R-Package assessment criteria are included to assess progress with the core aspects and desired outcomes of readiness preparation activities as contained in R-Package Assessment Framework.

3.2.3. Engagement of stakeholders to sustain or enhance livelihoods of local communities and to conserve biodiversity within the approach to REDD+

OUTCOME LEVEL

As a synthesis of the following output level assessments, please describe indicators related to biodiversity conservation and forest community livelihood development included in the ER Program if relevant (FCPF M&E Framework indicator 3.A.):		
Amount provided:	Currency	
Please describe how these funds target biodiversity and forest community livelihood development:	does not apply	

Please provide relevant examples on the inherent social and biodiversity benefits of REDD+, if relevant (FCPF M&E Framework Indicator 3.B.):
Examples of inherent social and biodiversity benefits of REDD+:
does not apply

OUTPUT LEVEL

Number of examples of actions where Ips, CSOs, and local communities participate actively, if relevant (FCPF M&E Framework 3.2.a.):	
#:	Please describe these actions on enhanced livelihoods and BD conservation, and restoration where Ips, CSO, and local communities participate actively:
	does not apply

Number of IPs, REDD Country CSO representatives (men/women) having been successfully trained by FCPF training programs (FCPF M&E Framework 3.1.b.):

Please list the training(s) conducted:	Duration (#of days)	# of participants		Rating
		# of men	# of women	
Free text				

- ☐ Significant progress
- ☐ Progressing well, further development
- ☐ Further development required
- ☐ Not yet demonstrating progress
- ☒ Not Applicable

Frequency of meetings of stakeholder engagement platforms (FCPF M&E Framework 3.2.a.):

Frequency:	Rating
	5

- ☐ Significant progress
- ☐ Progressing well, further
- ☐ Further development required
- ☐ Not yet demonstrating progress
- ☒ Not Applicable

Does your country R-Package (within the national REDD+ strategies and the monitoring systems) and/or ER Program include activities aiming at maintaining or enhancing livelihoods of local communities (FCPF M&E Framework 3.2.b.):

Yes/No:	Please describe these activities aiming at maintaining or enhancing livelihoods of local communities:
Yes no	does not apply

Does your country R-Package (within the national REDD+ strategies and the monitoring systems) and/or ER Program include activities aiming at conserving biodiversity (FCPF M&E Framework 3.2.c.):

Yes/No:	Please describe these activities aiming at conserving biodiversity:
Yes no	does not apply

Does your country R-Package and/or ER Program include SESA, an operational Grievance Mechanism, and an	
Yes/No:	Please describe these activities aiming at conserving biodiversity:
Yes no	does not apply

3.2.4 Knowledge Sharing

Has your country developed and published REDD+ knowledge products with FCPF support?	
Yes/No:	If yes, please provide a list of the published REDD+ knowledge products if any, during the reporting period:
Yes/No	1
	2
	3
	4
	...

How many people have been reached by these knowledge products, if any?	
Overall number by product:	Please provide a list of the published REDD+ knowledge products if any, during the reporting period:

Knowledge Product 1:	
# Total People Reached	0
# of Men	
# of Women	
Knowledge Product 2:	
# Total People Reached	0
# of Men	
# of Women	
Knowledge Product 3:	
# Total People Reached	0
# of Men	
# of Women	
Knowledge Product 4:	
# Total People Reached	0
# of Men	
# of Women	

Have some experts of your country participated in any South-South learning activities? If yes, how many?			
Yes/No	List the South-South	# Men	# Women
Yes/No	does not apply		
Yes/No			
Yes/No			
Yes/No			

3.2.2. Key Elements of performance based payment systems for emission reductions generated from REDD+ activities

OUTCOME LEVEL

As a synthesis of the following output level assessments, please briefly specify:

Are carbon accounting, programmatic elements and pricing operating as planned in your pilot, if relevant?

	Tracking
	<div> <input type="radio"/> Significant progress <input type="radio"/> Progressing well, further development <input type="radio"/> Further development required <input type="radio"/> Not yet demonstrating progress <input checked="" type="radio"/> Not Applicable </div>

Is the benefit sharing scheme being implemented according to plans within your pilot, if relevant?

	Tracking
Free text	<div> <input type="radio"/> Significant progress <input type="radio"/> Progressing well, further development <input type="radio"/> Further development required <input type="radio"/> Not yet demonstrating progress <input checked="" type="radio"/> Not Applicable </div>

Percentage and/or amount of monetary benefits shared with beneficiaries in approved pilot, if relevant?

	Tracking
Free text	<div> <input type="radio"/> Significant progress <input type="radio"/> Progressing well, further development <input type="radio"/> Further development required <input type="radio"/> Not yet demonstrating progress <input checked="" type="radio"/> Not Applicable </div>

OUTPUT LEVEL

As a synthesis of the following output level assessments, please briefly specify:	
Has your country submitted early ideas or ER-Program to the Carbon Fund and or others?	
Yes/No	Please briefly describe the content of these early ideas or ER-Program:
Yes/No	Free Text

Has your country signed an ERPA?	
Has your country submitted early ideas or ER-Program to the Carbon Fund and or others?	
Yes/No	Please briefly describe the content of this ERPA:
Yes/No	does not apply

Amount and date of disbursements for ER Program according to plans, if relevant:			
Date format:	mm/dd/yyyy	<Select>	
Date:	does not apply	Amount provided:	Currency
Date:		Amount provided:	Currency
Date:		Amount provided:	Currency

4. Issues Challenges and Risks

This section should present any problems, difficulties or constraints faced by the country in making progress towards the intended REDD+ results (outputs, outcomes and possible impacts), the main causes and their expected effect on the work plan. Actions that have been taken to overcome or manage these constraints/flaws/problems identified should be stated. Each problem/constraint should be stated as a separate point, along with associated proposed changes in work planning for the next six month/year to address it, as relevant.

Issue, Challenge, Risk	Actions to overcome, Adjustments to plan
	Work closely with the client and push the GA to be signed as soon as possible

5. Main Lessons Learned

This section should be used to provide information on important lessons learnt since the beginning of the readiness process. As this is a semi-annual report, it is expected that this section will be fairly substantial, making reference to different lessons learning documents, and/or events developed and dealing with issues of particular interest with respect to readiness of carbon funding under REDD+.

does not apply
